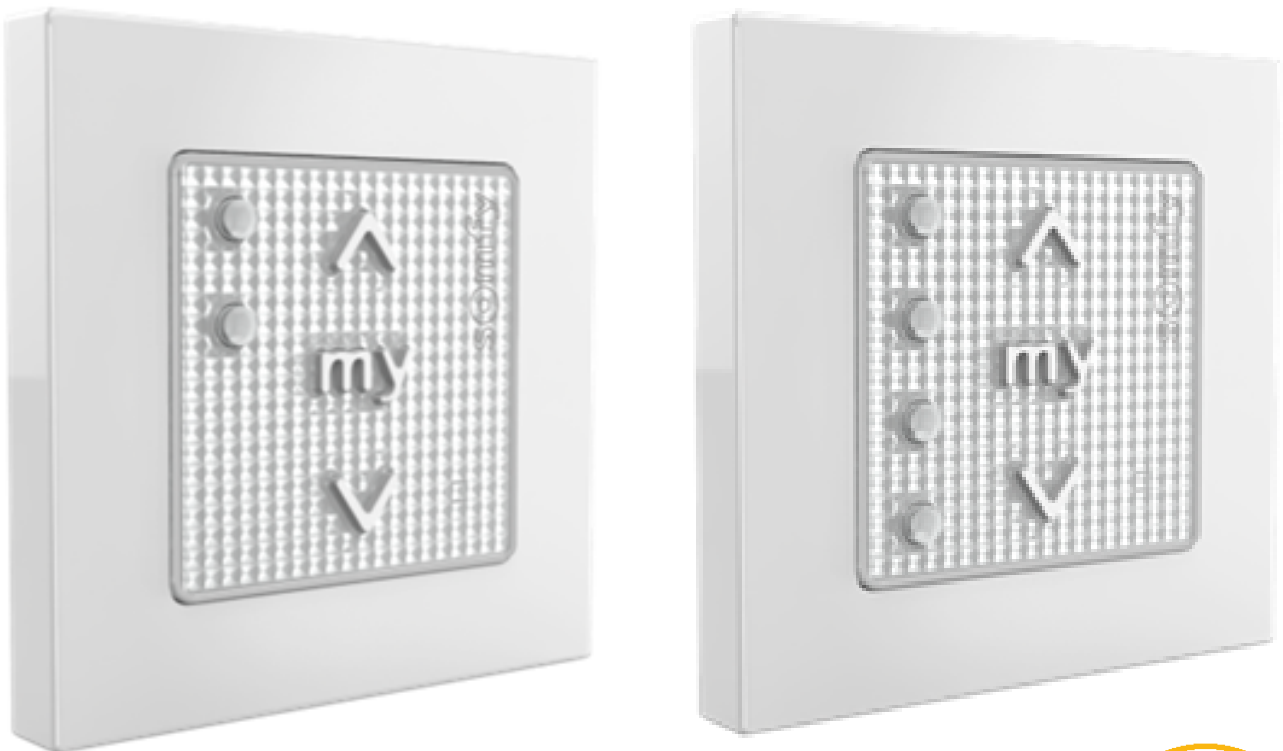


The sleek, intuitive wall mounted control

A complementary wall-switch with multi-channels management to control several applications.

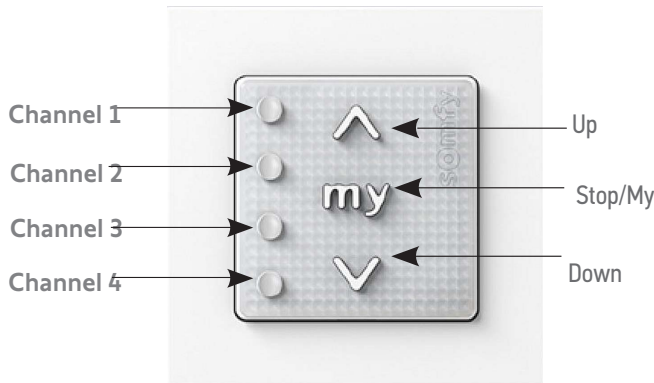


Somfy Smooove Origin

PRODUCT SPECIFICATIONS



PRODUCT DESCRIPTION



PRODUCT CODES

	Pure
Smooove Origin RTS*	1811045
Smooove Origin 2 RTS*	1800223
Smooove Origin 4 RTS*	1800295

* Comes with frame

BENEFITS FOR PROFESSIONALS

Easy Installation

- The wire-free solution allows easy installation, no need for wiring

Adaptable

- Choice of single or multi-channels, to suit all configurations of installing with the same design

Reliable Features

- An instinctive ergonomic to easily promote to the users
- A range of frames to suit all decor

BENEFITS FOR END USERS

Aesthetic

- The choice of multiple frame colours to suit all home styles
- The timeless design and its consistency with the rest of the Smooove range

Easily controllable

- Reliable controls to individually or simultaneously manage your applications
- Combine your application management as you wish with the direct access to the channels selection

COMPATIBLE END-PRODUCTS



Roller Blinds



Awnings



Roller Shutters



Curtains



External Screens



EVB *

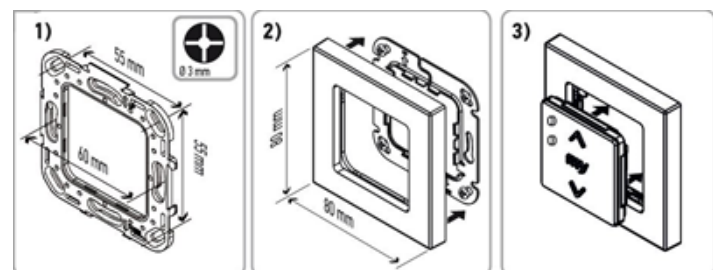


Venetian Blinds *

* On single channel only

TECHNICAL DATA

Size	50 x 50 x 10 mm (without frame) 80 x 80 x 10 mm (with frame)
Protection factor	IP30
Power Supply	3V Button Battery
Radio frequency	433.42 MHz
Radio range	150 meters in free field
Protocol	RTS
Temperature range – working	0°C to +48°C



WARNING

THIS PRODUCT CONTAINS A BUTTON BATTERY
If swallowed, a lithium button battery can cause severe or fatal injuries within 2 hours.
Keep batteries out of reach of children.
If you think batteries may have been swallowed or placed inside any part of the body, seek immediate medical attention.