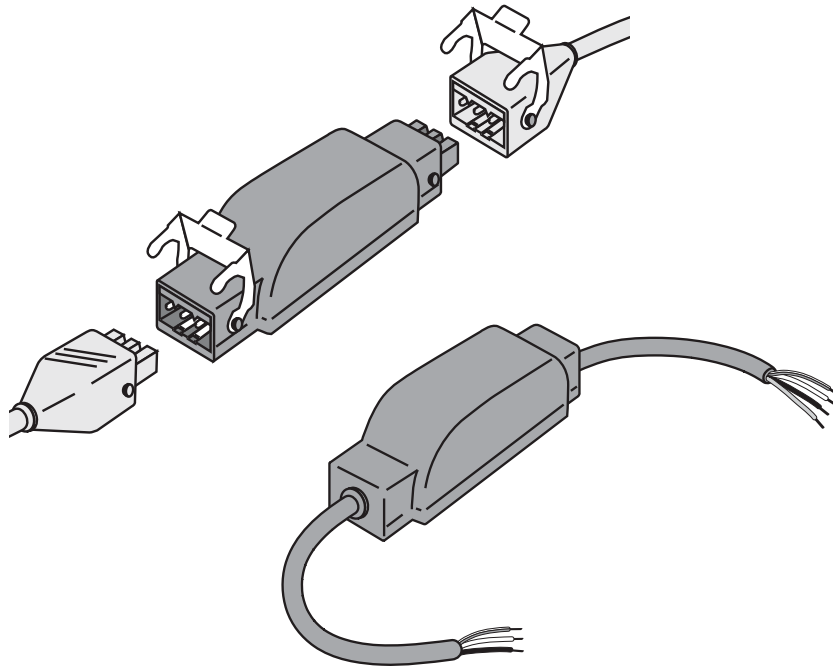




Universal Slim Receiver RTS Plug Universal Slim Receiver RTS



Ref. 5054294A

- FR
- DE
- IT
- NL
- EN
- ES
- CS
- PL
- DA
- SV
- FI
- NO



FR Notice d'installation**page 3**

Par la présente, Somfy déclare que l'appareil est conforme aux exigences essentielles et aux autres dispositions pertinentes de la directive 1999/5/CE. Une déclaration de conformité est mise à disposition à l'adresse internet www.somfy.com/ce. Utilisable en UE, CH et NO.

DE Gebrauchsanleitung**Seite 12**

Hiermit erklärt SOMFY, dass sich dieses Produkt in Übereinstimmung mit den grundlegenden Anforderungen und den anderen relevanten Vorschriften der Richtlinie 1999/5/EG befindet. Eine Konformitätserklärung ist unter der Internetadresse www.somfy.com/ce verfügbar. Verwendbar in der EU, der Schweiz und Norwegen.

IT Guida all'installazione**pagina 21**

Somfy dichiara che il dispositivo è conforme ai requisiti essenziali e alle altre disposizioni pertinenti della Direttiva 1999/5/CE. Una dichiarazione di conformità è disponibile all'indirizzo Internet www.somfy.com/ce. Valida in UE, CH e NO.

NL Installatiegids**blz. 30**

Bij deze verklaart Somfy dat het product voldoet aan de essentiële eisen en aan de andere beschikkingen van richtlijn 1999/5/CE. Een conformiteitsverklaring staat ter beschikking op de website www.somfy.com/ce. Te gebruiken in de EU, Zwitserland en Noorwegen.

EN Installation guide**page 39**

Somfy hereby declares that this product conforms to the essential requirements and other relevant provisions of Directive 1999/5/CE. A declaration of conformity is available at www.somfy.com/ce. Usable in EU, CH and NO.

ES Guía de instalación**página 48**

Por la presente, Somfy declara que el aparato es conforme a las exigencias esenciales y al resto de disposiciones pertinentes de la directiva 1999/5/CE. Podrá encontrar una declaración de conformidad en la página web www.somfy.com/ce. Aplicable para la UE, Suiza y Noruega.

CS Návod k použití**strana 57**

Společnost Somfy tímto prohlašuje, že přístroj odpovídá základním požadavkům a ostatním příslušným ustanovením směrnice 1999/5/CE. Prohlášení o shodě je k dispozici na internetové adrese www.somfy.com/ce. Platí pro EU, CH a NO.

PL Instrukcja obsługi**strona 66**

Somfy oświadcza niniejszym, że urządzenie jest zgodne z podstawowymi wymogami i innymi stosownymi przepisami dyrektywy 1999/5/CE. Deklaracja zgodności jest dostępna pod adresem internetowym www.somfy.com/ce. Produkt do użytku w Unii Europejskiej, Szwajcarii i Norwegii.

DA Installationsvejledning**side 75**

Hermed erklærer Somfy, at apparatet er i overensstemmelse med de væsentlige krav, samt med de andre relevante bestemmelser i direktivet 1999/5/CE. En overensstemmelseserklæring kan hentes på internetadressen www.somfy.com/ce. Anvendelig i EU, CH og NO.

SV Installationsanvisning**sidan 84**

Härmed intygar Somfy att produkten uppfyller huvudkraven och övriga relevanta bestämmelser i direktivet 1999/5/EG. Ett CE-dokument finns på Internetadressen www.somfy.com/ce. Gäller i EU, CH och NO.

FI Asennusohje**sivu 93**

Täten Somfy ilmoittaa, että laite on direktiivin 1999/5/CE olennaisten vaatimusten ja muiden asiaankuuluvien määräysten mukainen. Ilmoitus vaatimusten täyttymisestä on luettavissa Internet-osoitteessa www.somfy.com/ce. Voimassa EU:n alueella, Sveitsissä ja Norjassa.

NO Installasjonsguide**side 102**

Somfy erklærer herved at dette utstyret oppfyller nødvendige krav og alle relevante bestemmelser i direktivet 1999/5/EC. Et CE-dokument finnes tilgjengelig på www.somfy.com/ce. Kan brukes i EU, Sveits og Norge.

Contents

1. Introduction	1	5.4 Intermediate positions	6
2. Safety	1	6. Using the awning	7
2.1 Safety and responsibility	1	6.1 With an RTS control point	7
2.2 Specific safety advice	2	6.2 With an Inis RT/Inis RTS control point	7
3. Installation	2	6.3 Awning fitted with RTS sensors	7
3.1 Installation recommendations	2	7. Tips and recommendations	7
3.2 Fitting the Universal Slim Receiver RTS Plug	2	7.1 Problems with the RTS Slim Receiver?	7
3.3 Fitting the Universal Slim Receiver RTS	3	7.2 Restoring the original configuration	8
4. Commissioning	3	7.3 Resetting by replacement	8
4.2 Programming the RTS control point and direction of rotation	4	7.4 Disabling all the sensors.	9
5. Optional additional settings	4	8. Technical data	9
5.1 Adding/Deleting RT and RTS control points	4		
5.2 Adding/Deleting RTS sensors	5		
5.3 Creating multiple or group controls	5		

EN

1. Introduction

The RTS Universal Slim Receiver and the RTS Plug Universal Slim Receiver are receivers fitted with Radio Technology Somfy RTS. They enable an awning's tube motor to be controlled from an RT or RTS type control point. Their compact size enables them to be concealed in the awning's bracket, hidden from view.

The RTS Universal Slim Receiver and RTS Plug Universal Slim Receiver have different tube motor connection systems:

- the RTS Universal Slim Receiver is connected to the motor with terminal blocks.
- the RTS Plug Universal Slim Receiver is connected directly to the motor using a quick connection system (Plug: STAS3 / STAK3); quick connections ensure the receiver is sealed, making installation easy and safe (no wiring).

These RTS radio receivers, also known as RTS Slim Receivers, enable two intermediate positions to be set. They are connected to RTS wind and wind/sun sensors and protect the awning from wind as well as providing sunlight control.

The RTS Slim Receiver can be used:

- as an individual control - an RTS Slim Receiver is controlled by a single control point,
- as a multiple control - an RTS Slim Receiver is controlled by several control points (maximum of 12 control points),
- as a group control - several RTS Slim Receiver units are controlled from a single control point,
- to control the intermediate positions.

2. Safety

2.1 Safety and responsibility

Always read these installation instructions before installing this Somfy product.

This Somfy product must be installed by a person with professional knowledge of motorisation and home automation, for whom these instructions are intended.

Never begin installing without first checking the compatibility of this product with the associated equipment and accessories.

This guide describes how to install, commission and operate this product.

Moreover, the installer must comply with the current standards and legislation in the country in which the product is being installed, and inform his customers of the usage and maintenance conditions relevant to the product.

Any usage outside of applications defined by Somfy constitutes non-compliance, and is therefore not covered by the guarantee. In this event, as for all usage not consistent with the instructions given

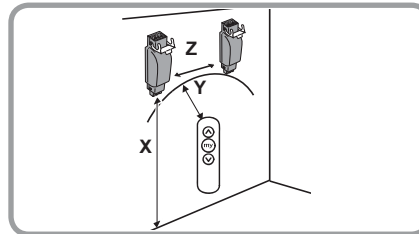
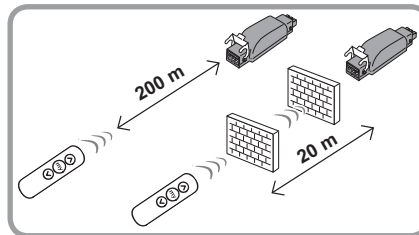
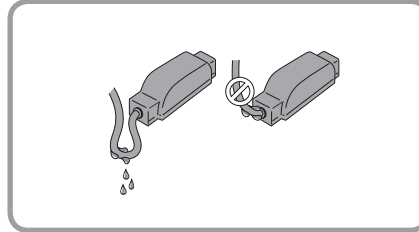
here, Somfy declines any responsibility for harm or damage.

2.2 Specific safety advice

- Install the RTS Slim Receiver away from rain and inclement weather.
- Never connect several motors to an RTS Slim Receiver.
- Never connect several RTS Slim Receiver units to a motor.
- Never install the RTS Slim Receiver near any metal surfaces as this may reduce the radio range.
- Check the radio range before fitting the RTS Slim Receiver. The radio range is limited by the radio appliance control standards.

Caution! The use of a radio appliance (e.g. Hi-Fi radio headphones) operating on the same frequency may cause interference and be detrimental to the product's performance.

- Make a loop in the RTS Universal Slim Receiver's power supply cable to prevent water from entering.
- The building in which the product is used may reduce the radio range. This range is:
 - X = 200 m in open space
 - Y = 20 m through 2 concrete walls



3. Installation

3.1 Installation recommendations

- Minimum distance (X) between an RTS Slim Receiver and the ground: X = 150 cm
- Minimum distance (Y) between an RTS Slim Receiver and a radio control point: Y = 30 cm
- Minimum distance (Z) between two RTS Slim Receiver units: Z = 20 cm.

3.2 Fitting the RTS Plug Universal Slim Receiver

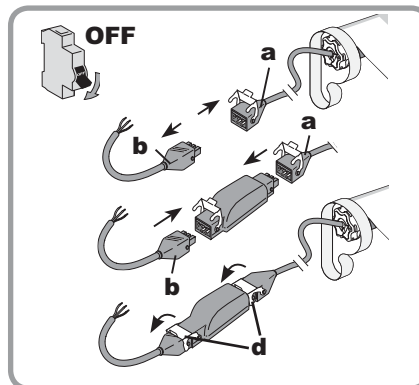
Caution! Comply with current standards and legislation when installing.

Caution: the RTS Plug Universal Slim Receiver must be installed, protected from rain and inclement weather conditions, out of sight and out of the reach of children.

- Turn off the power supply.
- Disconnect the motor cable quick connection (a) from the power supply cable quick connection (b):
- Connect the RTS Plug Universal Slim Receiver between the motor cable (a) and the power supply cable (b).
 - Motor = motor side (a),
 - Supply 230 V = power supply side (b).
- Lock the securing hooks (d).

Caution: ensure that the two quick connections are engaged correctly.

- Place the RTS Plug Universal Slim Receiver in the awning bracket to conceal it.
- Fit the RTS Plug Universal Slim Receiver (using rilsan cables for example).



3.3 Fitting the Universal Slim Receiver RTS

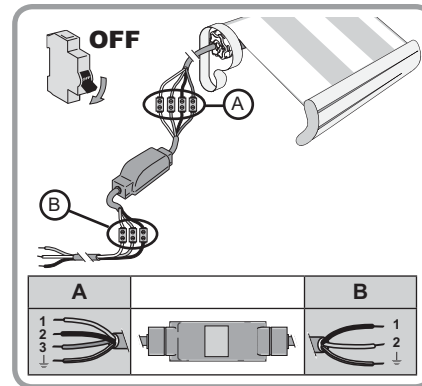
Caution! Comply with current standards and legislation when installing.

Caution: the RTS Universal Slim Receiver must be installed, protected from rain and inclement weather conditions, out of sight and out of reach.

- Turn off the power supply.
- Disconnect the motor cable from the power supply.
- Connect the RTS Universal Slim Receiver to the motor cable and the power supply cable using terminal blocks:
 - Motor = Motor (A),
 - Supply 230 V = Power supply (B).

A	1	Blue	Neutral	B	1	Blue	Neutral
	2	Black	Up		2	Black	Live
	3	Brown	Down		↓	Green/ yellow	Earth
	↓	Green/ yellow	Earth				

- Place the RTS Universal Slim Receiver into the awning bracket to conceal it.
- Fit the RTS Plug Universal Slim Receiver (using rilsan cables for example).



4. Commissioning

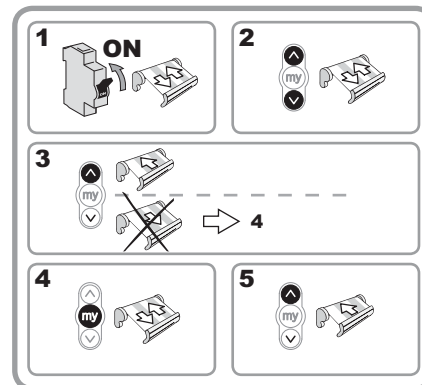
To commission the RTS Slim Receiver, an RTS control point must be programmed.

Caution! If the installation has several RTS Slim Receiver units, only one motor and one RTS Slim Receiver should be connected at a time.

Caution! Do not use a control point with a single button for commissioning. These control points are not suitable for commissioning.

4.1 Checking the direction of rotation

- 1) Switch on the motor power supply: the awning makes a brief up and down movement.
- 2) Press the Up and Down buttons on the RTS control point at the same time: the awning makes another brief up and down movement.
- 3) Press the up button on the RTS control point:
 - If the awning is raised, the direction of rotation is correct: go to the paragraph entitled "Programming an RTS control point and direction of rotation"
 - if the awning is lowered, the direction of rotation is incorrect: move onto the next step.
- 4) Press the STOP/my button on the RTS control point until the awning makes an up and down movement: the direction of rotation has been reversed.
- 5) Press the RTS control point Up button to check the direction of rotation.



4.2 Programming the RTS control point and direction of rotation

- Press the PROG button on the RTS control point briefly until the awning makes a brief up and down movement: the RTS control point and direction of rotation of the motor have been programmed in the RTS Slim Receiver.

Caution: if there is a power outage before programming, the RTS Slim Receiver retains the pre-memorised direction of rotation. Check the direction of rotation before programming the control point.



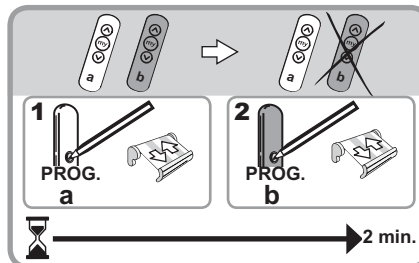
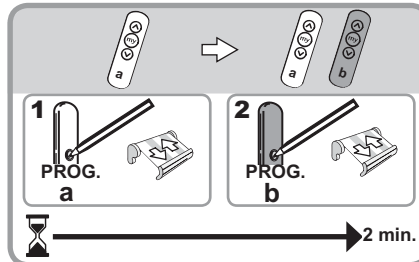
5. Optional additional settings

5.1 Adding/Deleting RT and RTS control points

5.1.1 RTS control point

Caution: a maximum of 12 RT/RTS control points may be programmed into an RTS Slim Receiver.

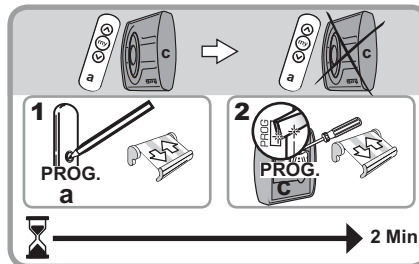
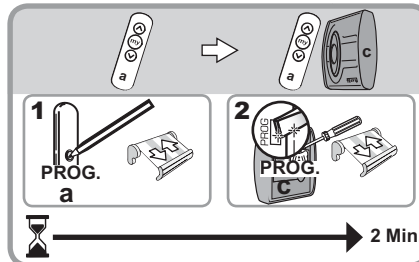
- 1) Press the PROG button on the programmed control point (a) until the awning makes an up and down movement: the RTS Slim Receiver is in its programming mode for 2 minutes.
- 2) Briefly press the PROG button on the RTS control point (b) to be added or deleted: the awning makes an up and down movement; the RTS control point (b) has been added/deleted.



5.1.2 Inis RT/Inis RTS control point

Caution: a maximum of 12 RT/RTS control points may be programmed into an RTS Slim Receiver.

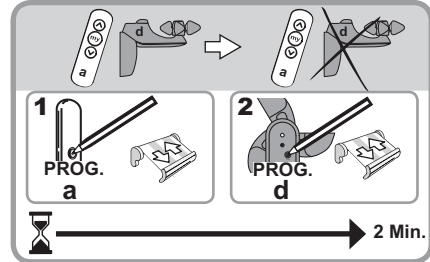
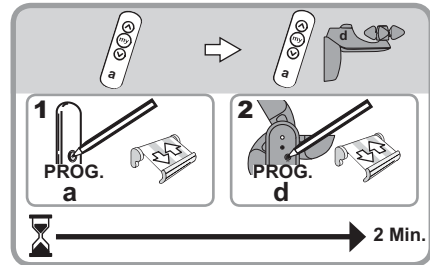
- 1) Press the PROG button on the programmed RTS control point (a) until the awning makes an up and down movement: the RTS Slim Receiver is in its programming mode for 2 minutes.
- 2) Form a contact between the metal PROG plate and the battery bracket for the Inis RT/Inis RTS (c) to be added/deleted: the awning makes an up and down movement; the Inis RT/Inis RTS control point (c) has been added/deleted.



5.2 Adding/Deleting RTS sensors

Caution: a maximum of 3 RTS sensors may be programmed into an RTS Slim Receiver.

- 1) Press the PROG button on the programmed control point (a) until the awning makes an up and down movement: the RTS Slim Receiver is in its programming mode for 2 minutes.
- 2) Briefly press the PROG button on the RTS sensor (d) to be added/deleted: the awning makes an up and down movement: the RTS sensor (d) has been added/deleted.

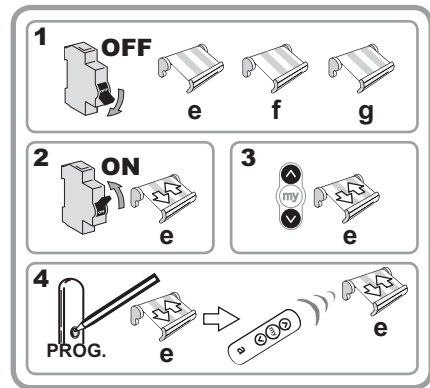


5.3 Creating multiple or group controls

5.3.1 Group control

Group control: an RTS control point controls several RTS Slim Receiver units.

- 1) Switch off the power supply to the RTS Slim Receiver (connected to the motorised awnings: e, f and g for example) to be controlled from a single control point.
- 2) Switch on the power supply to the first RTS Slim Receiver to be linked to the control point: the awning (e) makes a brief up and down movement.
- 3) Press the Up and Down buttons on the RTS control point at the same time: the awning makes another brief up and down movement.
- 4) Press the PROG button on the RTS control point until the awning (e) makes another brief up and down movement: the RTS control point has been programmed.
- 5) Switch on the power supply to another RTS Slim Receiver to be linked and repeat steps 3) and 4).
- 6) Repeat the procedure for each of the other RTS Slim Receiver units to be added to this control point.



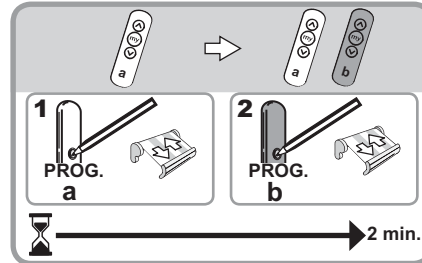
EN

5.3.2 Multiple control

Multiple control: an RTS Slim Receiver is controlled by several RTS control points.

Caution: a maximum of 12 control points may be programmed into an RTS Slim Receiver.

- 1) Press the PROG button on the programmed control point (a) until the awning makes an up and down movement: the RTS Slim Receiver will be in programming mode for 2 minutes.
 - 2) Briefly press the PROG button on the RTS control point (b) to be added: the awning makes an up and down movement; the RTS control point has been added.
- Repeat these two steps to add each RTS control point.

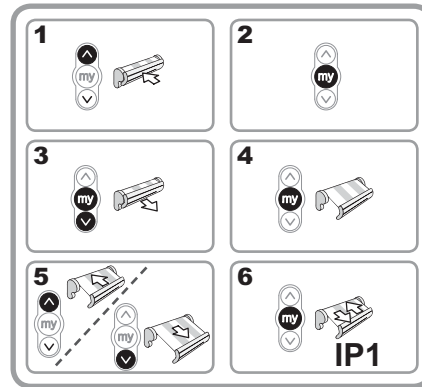


5.4 Intermediate positions

Two intermediate positions may be programmed: a position accessible when the awning is raised, referred to as intermediate position 1 (IP1) and a position accessible when the awning is lowered, referred to as intermediate position 2 (IP2).

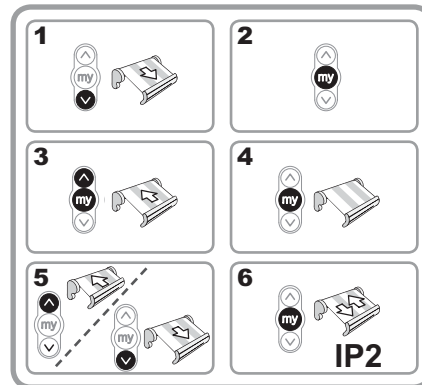
5.4.1 Setting the intermediate position 1 (IP1)

- 1) Raise the awning to its upper end limit position.
- 2) Press the STOP/my button.
- 3) Press the Down and STOP/my buttons at the same time: the awning is lowered.
- 4) Press the STOP/my button when the awning is at the correct height.
- 5) If necessary, adjust the position of the awning using the Up and Down buttons.
- 6) Press the STOP/my button until the awning makes an up and down movement: intermediate position 1 (IP1) has been programmed.



5.4.2 Setting intermediate position 2 (IP2)

- 1) Lower the awning to the lower end limit.
- 2) Press the STOP/my button.
- 3) Press the Up and STOP/my buttons at the same time: the awning is raised.
- 4) Press the STOP/my button when the awning is at the correct height.
- 5) If necessary, adjust the position of the awning using the Up and Down buttons.
- 6) Press the STOP/my button until the awning makes an up and down movement: intermediate position 2 (IP2) has been programmed.



5.4.3 Using intermediate positions

- Press the STOP/my button to find the programmed intermediate position (IP1 or IP2): the awning starts to move and stops in the intermediate position.

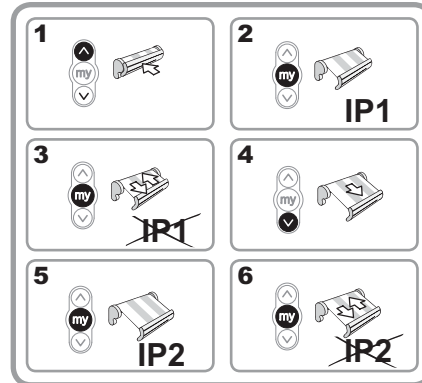
5.4.4 Modifying the intermediate positions

- Follow the procedure for setting the intermediate positions (IP1 or IP2) to modify the intermediate positions.

Caution! The awning must not be in the intermediate position (IP1 or IP2).

5.4.5 Deleting an intermediate position

- 1) Place the awning in the raised position.
- 2) Press the STOP/my button briefly to find the intermediate position (IP1) to be deleted.
- 3) Press the STOP/my button until the awning makes an up and down movement: intermediate position (IP1) has been deleted.
- 4) Place the awning in the lowered position.
- 5) Press the STOP/my button briefly to find the intermediate position (IP2) to be deleted.
- 6) Press the STOP/my button until the awning makes an up and down movement: intermediate position (IP2) has been deleted.



EN

6. Using the awning

6.1 With an RTS control point

- Press the Up or Down button to move the awning.
- Briefly press the STOP/my button to stop the awning when it is moving.
- Press the STOP/my button briefly to find the set intermediate positions (IP1 or IP2).

6.2 With an Inis RT/Inis RTS control point

- Press the Inis RT/Inis RTS button to move the awning: Up/STOP/Down/STOP/Up ...

6.3 Awning fitted with RTS sensors

- The RTS Slim Receiver is compatible with Radio Technology Somfy RTS sensors (wind, sun etc.).
- Refer to the sensor guide for information on sensor operation.

7. Tips and recommendations

7.1 Problems with the RTS Slim Receiver?

Problems	Possible causes	Solutions
The awning is lowered when the Up button is pressed.	The direction of rotation has not been checked.	Modify the direction of rotation by restoring the RTS Slim Receiver factory settings.
	There was a power outage before setting the direction of rotation.	Restore the RTS Slim Receiver factory settings.
The awning does not react when a button on the control point is pressed.	The control point has not been programmed into the RTS Slim Receiver.	Follow the procedure for adding an RTS control point.
	The batteries in the control point are weak.	Replace the batteries.
	Radio interference prevents the operation of the RTS control point and RTS Slim Receiver.	Turn off any radio equipment nearby.
	The control point used is not compatible with the RTS Slim Receiver.	Ensure the two products are compatible.
Nothing operates	The motor is out of order or faulty.	Test the motor.
	The power supply is faulty.	Check the power supply.

7.2 Restoring the original configuration

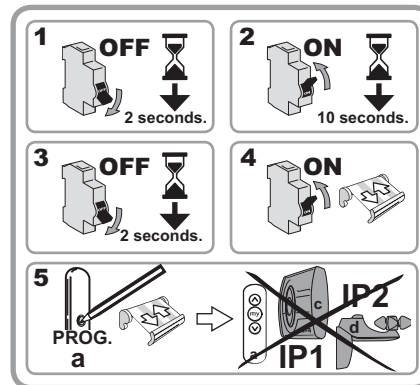
Caution: This reset is carried out using an RTS control point which has already been programmed into the RTS Slim Receiver.

Caution! This reset deletes all programmed control points, sensors and intermediate positions. The Sun function will be deactivated.

Caution! Only switch off the power for the motor to be reset.

Caution! Do not use an Inis RT/Inis RTS type control point for resetting.

- 1) Cut the power supply for 2 seconds.
- 2) Switch the power supply back on for approximately 10 seconds (for at least 5 seconds but no longer than 15 seconds).
- 3) Cut the power supply for 2 seconds.
- 4) Switch the power supply back on: the awning moves for several seconds.
- 5) Press the PROG button on the RTS control point (a) until the awning makes two up and down movements: all the RTS control points, RTS sensors and intermediate positions are cleared.
 - Follow the procedures in the "Commissioning" section to add RTS control points, RTS sensors and intermediate positions.



7.3 Resetting by replacement

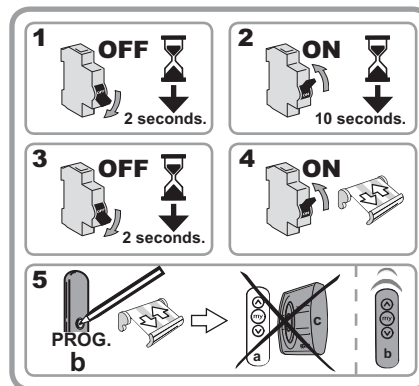
Caution: this reset is carried out if all RTS control points have been lost or broken.

Caution! This reset deletes all other linked control points.

Caution! Only switch off the power for the motor to be reset.

Caution! Do not use an Inis RT/Inis RTS type control point for resetting.

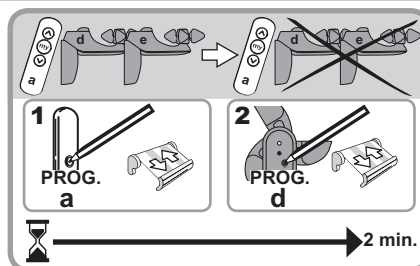
- 1) Cut the power supply for 2 seconds.
- 2) Switch the power supply back on for approximately 10 seconds (for at least 5 seconds but no longer than 15 seconds).
- 3) Cut the power supply for 2 seconds.
- 4) Switch the power supply back on: the awning moves for several seconds.
- 5) Briefly press the PROG button on the new RTS control point (b): the awning makes an up and down movement. All RTS control points are cleared and the new RTS control point (b) is programmed into the motor.



EN

7.4 Deleting all the sensors

- 1) Press the PROG button on the programmed RTS control point (a) until the awning makes an up and down movement: the RTS Slim Receiver is in its programming mode for 2 minutes.
- 2) Press and hold the PROG button on an operational RTS sensor (d) to reset memorisation of the sensors: the awning makes two up and down movements. All the sensors (d, e, etc.) have been deleted from the RTS Slim Receiver.



8. Technical data

Radio frequency	433.42 MHz
Power supply	230V/50Hz
Index protection rating	IP 54
Maximum charge	3 A
Operating temperature	- 30°C to + 70°C
Product category	II
Activation time	3 min
Number of programmable RTS sensors on an RTS Universal Slim Receiver	3 maximum
Number of programmable RTS remote controls on an RTS Universal Slim Receiver	12 maximum
RTS Plug Universal Slim Receiver	STAS 3/STAK 3 connection

EN