

SOMFY-SD

SMOKE DETECTOR

NF EN



Photoelectric detector
operating on alkaline batteries
(supplied)
Audible alarm: >85 dBA at 3 m



MAF07-K

CONTENTS

1. CERTIFICATION
2. GENERAL DESCRIPTION
3. RECOMMENDED LOCATIONS
4. UNADVISABLE LOCATIONS
5. INSTALLING THE DETECTOR
6. REPLACING THE BATTERY
7. SOMFY-SD OPERATING TEST
8. MAINTENANCE
9. SMOKE DETECTOR LIMITATIONS
10. WARRANTY

1. CERTIFICATION

The CE marking on this product certifies that it complies with the applicable European directives, and in particular with the harmonised specifications of standard EN 14604 in light of the Construction Products Directive 89/106/EEC.

It is issued by AFNOR Certification
11 rue Francis de Pressensé 93 571 LA PLAINE ST DENIS Cedex.

2. GENERAL DESCRIPTION

The **Somfy-SD** helps to protect you and your home 24 hours a day. It is specially designed for monitoring private dwellings (houses, apartments, etc.).

If smoke is detected, a powerful audible alarm is triggered and an alarm message is sent to the Somfy central unit.

⚠ Somfy-SD is not a gas detector.

3. RECOMMENDED LOCATIONS

For optimum protection:

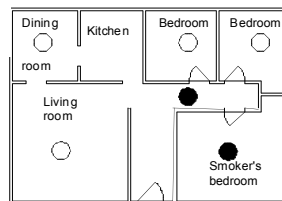
- Place a detector in each room, avoiding the unadvisable locations given in §4.

For basic protection:

- Place a detector on each storey.
- Place a detector near sleeping areas (for example, in the corridor leading to the bedrooms; if the corridor is long (>10 m), place one detector at each end).
- Place a detector in every bedroom occupied by a smoker.

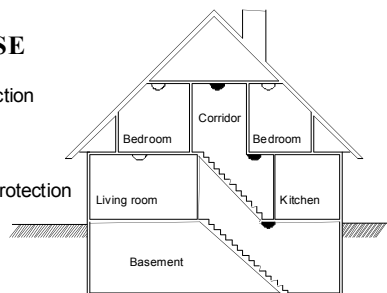
APARTMENT

- Basic protection
- Additional protection



HOUSE

- Basic protection
- Additional protection



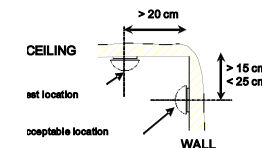
Location of the detector in the room:

It is essential to fix the detector **to the ceiling** in the centre of the room, and failing this:

- More than 20 cm away from any obstacle (wall, partition, beam, etc.).
- More than 60 cm from any corner of the room.

If it is not possible to fix the detector to the ceiling, fix it to the wall:

- 15 to 25 cm away from the ceiling.
- More than 60 cm from any corner of the room.



4. UNADVISABLE LOCATIONS

Do not install the detector:

- Within 1 m of heating, cooling or ventilation outlets. The smoke could be extracted or diluted.
- In a place where the temperature could drop below 0°C or rise above +50°C; there is a risk that the detector will malfunction.
- In a room where there is a risk of condensation. Bathrooms and laundry rooms should be avoided.
- Anywhere where smoke may be emitted (kitchen or poorly ventilated garage) and generate false alarms.
- In an excessively dusty place.
- Out of range of the Somfy central unit.
- On a metal surface.

Processing of end-of-life electrical and electronic appliances



This symbol indicates that this product must not be processed with household waste. It must be taken to a suitable collection point for electrical and electronic equipment recycling:

- Retail outlets if an equivalent product is being purchased.

Collection points available locally (local tip, separate collection, etc.).



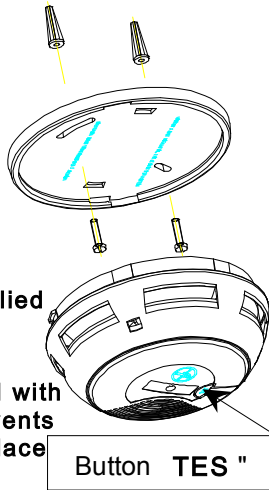
European Recycling Platform Member

Certified characteristics		
Type of mounting	Wall only Ceiling only Wall or ceiling	<input type="checkbox"/> YES <input checked="" type="checkbox"/> No <input type="checkbox"/> YES <input checked="" type="checkbox"/> No <input checked="" type="checkbox"/> YES <input type="checkbox"/> No
Main power source	Inside the device	
Battery life	ALKALINE battery	3 years
Interconnectable device (wired/radio)		<input type="checkbox"/> YES <input checked="" type="checkbox"/> No
Suitable for installation in motorhomes		<input type="checkbox"/> YES <input checked="" type="checkbox"/> No
Connection to external auxiliary devices		<input type="checkbox"/> YES <input checked="" type="checkbox"/> No
Radio link		<input checked="" type="checkbox"/> YES <input type="checkbox"/> No
Individual alarm indicator		<input checked="" type="checkbox"/> YES <input type="checkbox"/> No
Alarm deactivation device		<input type="checkbox"/> YES <input checked="" type="checkbox"/> No

5. INSTALLING THE DETECTOR

Now that you have read paragraphs 1 to 4, you are ready to install your **Somfy-SD**.

- Remove the mounting plate from the detector by turning it anti-clockwise.
- Place the mounting plate in the planned location and mark the position of the 2 fixing holes with a pencil.
- Use the 2 fixing screws and anchors supplied. Secure the mounting plate firmly.
- Install the battery (see §6).
- Fix the detector to the mounting plate by turning it clockwise until it locks in place.



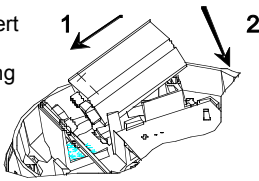
⚠ The Somfy-SD is supplied with the battery disconnected.

⚠ The Somfy-SD is fitted with a safety device that prevents it from being locked in place without a battery.

REPLACING THE BATTERY

Your Somfy-SD will BEEP once a minute if the battery is low. You should replace the battery immediately as set out below:

- Remove the detector from its mounting plate (turn it anti-clockwise).
- Remove the spent battery. Do not throw the battery away; return it to the retailer.
- Insert a new 9 V DC **ALKALINE** battery with a 3-year life.
- Make sure that the battery is connected correctly and reinsert it into the compartment.
- Fix the detector to the mounting plate by turning it clockwise until it locks in place.
- Check that the Somfy-SD is operating correctly (§7).



We recommend that you replace the alkaline battery every 3 years.

⚠ Never use rechargeable batteries

7. SOMFY-SD OPERATING TEST

The set-up procedure is described in the Somfy central unit instructions.

During normal operation, the red indicator on the **Somfy-SD** flashes once a minute. You should perform a full operating test on your detector once a month or after you have replaced the battery, by pressing and holding the "TEST" button located on the cover (shown in §5) for around ten seconds:

- The indicator on the Somfy-SD flashes.
- Then, the alarm emits a high-pitched tone and the central unit switches to fire alarm mode.
- Releasing the button immediately stops the alarm.

Make sure that everyone who lives in your home is familiar with the sound of the **Somfy-SD** and knows that they must evacuate the house when they hear it.

⚠ Stay a reasonable distance away from the detector (at arm's length) to protect your ears from the very loud tone.

High sound power > 85 dBA at 3m (94 dBA at 1m)

⚠ Do not attempt to trigger an alarm by any other means (using a lighter, etc.); you could damage the detector or worse, start a fire.

8. MAINTENANCE

Your detector has been designed to require as little maintenance as possible. However, you should carry out a few simple operations **once a year**. Remove the detector and then:

- Clean the slots on the detector (located on the side) with a vacuum cleaner, using a soft brush or one of its accessories.
- Use a slightly damp cloth to clean the outside of the cover.

We recommend that you replace the detector after 10 years.

⚠ If your detector is in a dirty location, it must be cleaned more often.

⚠ Maintaining your detector is important to your safety. A dirty device can either trigger falsely or trigger too late.

⚠ In the event of repeated false alarms, check that you have not installed the detector in one of the inadvisable locations given in §4. The audible alarm can be stopped by removing the detector from its mounting plate and taking out the battery (see §6). Clean the detector, reinsert the battery and replace the detector on its mounting plate.

9. SMOKE DETECTOR LIMITATIONS

A smoke detector is an economical device that provides rapid warning that a fire has started; however, residential fires start in different ways and are often unforeseeable. Under certain circumstances, the smoke detector might not provide warning of a fire if:

- The battery is low or the wrong type (see §6).
- The electronics are faulty; they must be checked regularly as set out in §7.
- It has not been maintained (see §8).
- It is in the wrong location (see recommendations in §4).
- The smoke does not reach it. The smoke detector cannot detect smoke generated by a fire on a different storey or on the other side of a door.
- It is out of range of the wireless central unit (see §7).
- For maximum protection, we recommend that you place a detector in every bedroom.

⚠ The Somfy-SD helps save lives, but you must still take out insurance to protect people and property.

The detector has a 10-year service life when it is located in a clean environment.

10. 5-YEAR WARRANTY

Somfy provides a **5-year** warranty for the **Somfy-SD** (excluding the battery) against all manufacturing defects, from the date of purchase.

SOMFY France
Customer Service Department
1 place du Crêtet
74 300 CLUSES

This warranty does not apply to damaged, modified, incorrectly-used or incorrectly-maintained Somfy-SD detectors.

Manufactured by FARE-BP10809 45308 PITHIVIERS CEDEX for Somfy.

⚠ The purchaser must keep this operating manual for the entire lifetime of the Somfy-SD.