

<b>SOMFY®</b>	14/09/98	<b>LT 50 TECHNICAL DATA</b>	DMKI - FPTE RANGE 2 LT50Range2R1
---------------	----------	-----------------------------	----------------------------------------

Nominal voltage	120 V - 60 Hz
Power supply tolerances	108 - 126V
Thermal time	5 minutes
Number of wires of the cable	4
Wire section	AWG 18
Type of limit switch unit	Quick limit switch
Capacity of the LSU	46 turns
Repeatability	± 5°
System of protection	IP 44
Interface drawings	Screw implantation for LT50 mounting 206810-Wheel interface LT50 206821-Crown interface LT50 206822-Interface drawing star head LT50 and LT50PA/PS 206823-Interface drawing LT50&60 buttons 206817.
Basic crown for tube Ø	50 x 1,5 mm
Temperature working range	Normal use : -10°C to +40°C      Exceptional use (20% of the life time not continuous) : -25°C to + 70°C
Noise level	According to SOMFY measures (for information only).Worse value : in load up direction during 10 seconds.

Designation	Nm / in.Lbs	rpm	reference	mm	mm	mm	mm	W	A	°C	Brake type	kg	dBA
	Nominal torque	Nominal speed		L1 max.	L2 (±3 mm)	L3 max.	tube	Rated power	Rated current	Thermal tripping		Weight	Noise
<b>504S2</b>	<b>4/35</b>	<b>38</b>	200246	505	490	513	440	80	0,7	140	sliding	1,72	52
<b>506S2</b>	<b>6/53</b>	<b>38</b>	200247	525	510	533	460	110	0,95	140	sliding	1,87	55
<b>510R2</b>	<b>10/88</b>	<b>14</b>	200230	505	490	513	440	80	0,7	140	sliding	1,72	-
<b>510S2</b>	<b>10/88</b>	<b>38</b>	200248	555	540	563	490	150	1,3	140	sliding	2	56
<b>515A2</b>	<b>15/132</b>	<b>20</b>	200240	525	510	533	460	130	1,1	140	sliding	1,95	-
<b>515S2</b>	<b>15/132</b>	<b>38</b>	200249	605	590	613	540	210	1,8	140	sliding	2,55	56
<b>520R2</b>	<b>20/177</b>	<b>14</b>	200232	525	510	533	460	130	1,1	140	sliding	1,95	-
<b>525A2</b>	<b>25/220</b>	<b>20</b>	200242	555	540	563	490	180	1,6	140	sliding	2,15	-
<b>530R2</b>	<b>30/260</b>	<b>14</b>	200234	555	540	563	490	170	1,5	140	sliding	2,15	-
<b>535A2</b>	<b>35/310</b>	<b>20</b>	200244	605	590	613	540	250	2,1	140	sliding	2,55	-
<b>540R2</b>	<b>40/350</b>	<b>14</b>	200236	605	590	613	540	210	1,8	140	sliding	2,55	-
<b>550R2</b>	<b>50/440</b>	<b>14</b>	200238	605	590	613	540	250	2,1	140	sliding	2,55	-

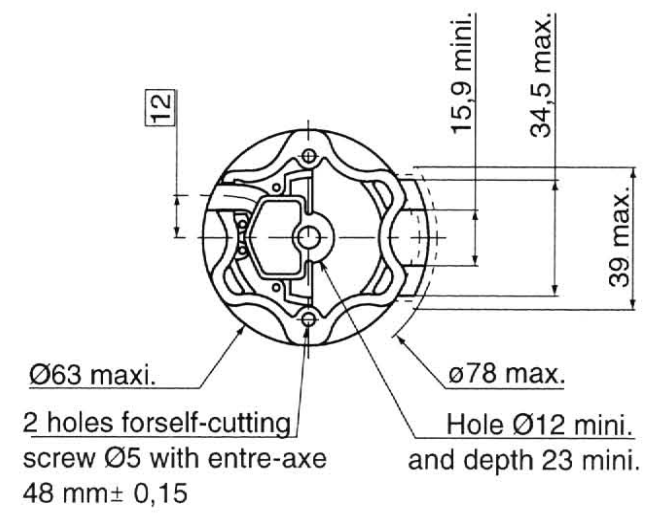
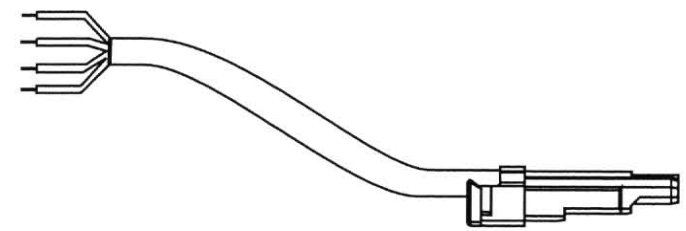
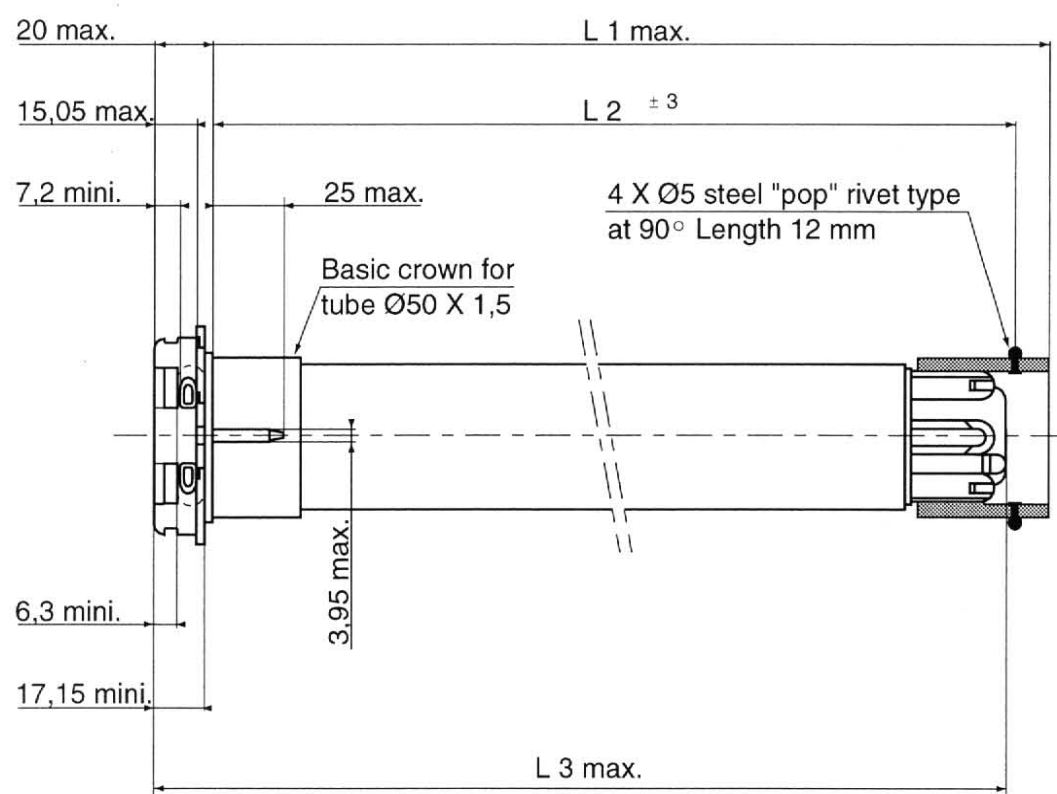


14/09/98

LT 50 TECHNICAL DATA

RANGE 2

WIRING	Neutral	White
	White button	Black
	Yellow button	Red
	Earth	Green



Visa : BEM Quality MKI