



12/02/98

**LT 50 TECHNICAL DATA**

DMKI - FPTE  
RANGE 3  
LT50Range3R0

|                              |   |
|------------------------------|---|
| Nominal voltage              | 100 V - 50/60 Hz  |
| Power supply tolerances      | 95 - 107V   |
| Thermal time                 | 5 minutes   |
| Number of wires of the cable | 4   |
| Wire section                 | 0,75 mm <sup>2</sup>  |
| Type of limit switch unit    | Quick limit switch  |
| Capacity of the LSU          | 46 turns  |
| Repeatability                | ± 5°  |
| System of protection         | IP 44   |
| Interface drawings           | Screw implantation for LT50 mounting 206810-Wheel interface LT50 206821-Crown interface LT50 206822-Interface drawing star head LT50 and LT50PA/PS 206823-Interface drawing LT50&60 buttons 206817. |
| Basic crown for tube Ø       | 50 x 1,5 mm   |
| Temperature working range    | Normal use : -10°C to +40°C    Exceptionnall use (20% of the life time not continuous) : -25°C to + 70°C  |
| Noise level                  | According to SOMFY measures (for information only).Worse value : in load up direction during 10 seconds.  |

| Designation | Nm             | rpm           | reference | mm      | mm         | mm      | mm   | W           | A             | °C               | Brake type | kg     | dBA   |
|-------------|----------------|---------------|-----------|---------|------------|---------|------|-------------|---------------|------------------|------------|--------|-------|
|             | Nominal torque | Nominal speed |           | L1 max. | L2 (±3 mm) | L3 max. | tube | Rated power | Rated current | Thermal tripping |            | Weight | Noise |
| 505S3       | 5              | 32/38         | 200365    | 505     | 490        | 513     | 440  | 100         | 1,05          | 140              | sliding    | 1,75   | -     |
| 510R3       | 10             | 12/14         | 200351    | 505     | 490        | 513     | 440  | 80          | 0,85          | 140              | sliding    | 1,75   | -     |
| 510S3       | 10             | 32/38         | 200366    | 555     | 540        | 563     | 490  | 145         | 1,55          | 150              | sliding    | 2      | -     |
| 515R3       | 15             | 12/14         | 200352    | 525     | 510        | 533     | 460  | 115         | 1,25          | 140              | sliding    | 1,85   | -     |
| 515S3       | 15             | 32/38         | 200367    | 605     | 590        | 613     | 540  | 220         | 2,35          | 150              | sliding    | 2,55   | -     |
| 520R3       | 20             | 12/14         | 200353    | 555     | 540        | 563     | 490  | 135         | 1,4           | 150              | sliding    | 2      | -     |
| 520A3       | 20             | 17/20         | 200360    | 555     | 540        | 563     | 490  | 160         | 1,7           | 150              | sliding    | 2      | -     |
| 525R3       | 25             | 12/14         | 200354    | 555     | 540        | 563     | 490  | 145         | 1,55          | 150              | sliding    | 2      | -     |
| 530R3       | 30             | 12/14         | 200355    | 555     | 540        | 563     | 490  | 160         | 1,7           | 150              | sliding    | 2,15   | -     |
| 530A3       | 30             | 17/20         | 200362    | 605     | 590        | 613     | 540  | 220         | 2,35          | 150              | sliding    | 2,55   | -     |
| 540R3       | 40             | 12/14         | 200356    | 605     | 590        | 613     | 540  | 220         | 2,35          | 150              | sliding    | 2,55   | -     |
| 550R3       | 50             | 12/14         | 200358    | 605     | 590        | 613     | 540  | 250         | 2,6           | 150              | sliding    | 2,6    | -     |

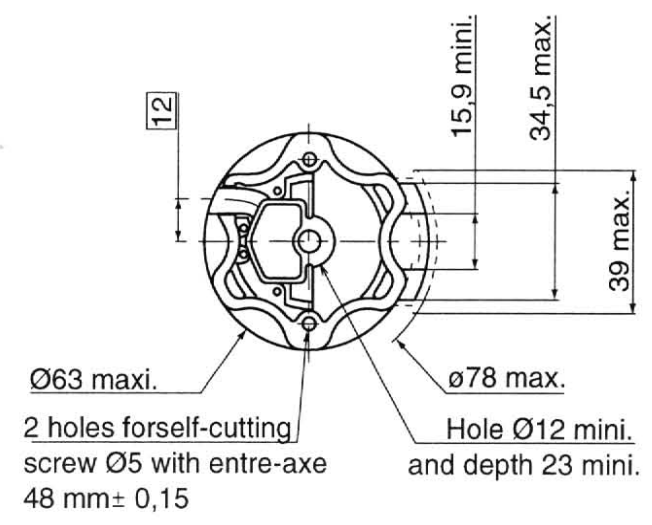
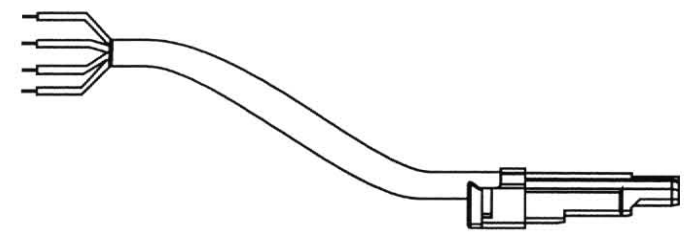
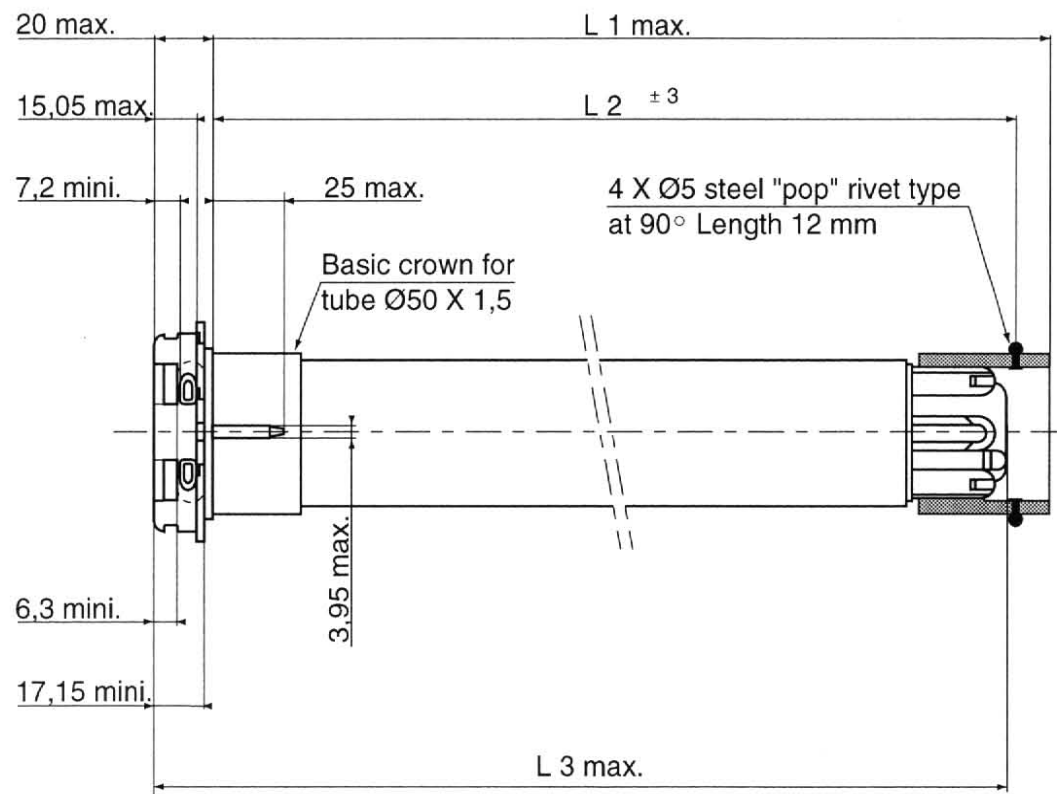


12/02/98

LT 50 TECHNICAL DATA

RANGE 3

| WIRING | Neutral       | White |
|--------|---------------|-------|
|        | White button  | Black |
|        | Yellow button | Red   |
|        | Earth         | Green |



Visa : BEM *[Signature]* Quality *[Signature]* MKI *[Signature]*