

SOMFY®

12/02/98

LT 50 TECHNICAL DATADMKI - FPTE
RANGE 4
LT50Range4R0

Nominal voltage	200 V - 50/60 Hz
Power supply tolerances	180 - 220V
Thermal time	5 minutes
Number of wires of the cable	4
Wire section	0,75 mm ²
Type of limit switch unit	Quick limit switch
Capacity of the LSU	46 turns
Repeatability	± 5°
System of protection	IP 44
Interface drawings	Screw implantation for LT50 mounting 206810-Wheel interface LT50 206821-Crown interface LT50 206822-Interface drawing star head LT50 and LT50PA/PS 206823-Interface drawing LT50&60 buttons 206817.
Basic crown for tube Ø	50 x 1,5 mm
Temperature working range	Normal use : -10°C to +40°C Exceptionnal use (20% of the life time not continuous) : -25°C to + 70°C
Noise level	According to SOMFY measures (for information only).Worse value : in load up direction during 10 seconds.

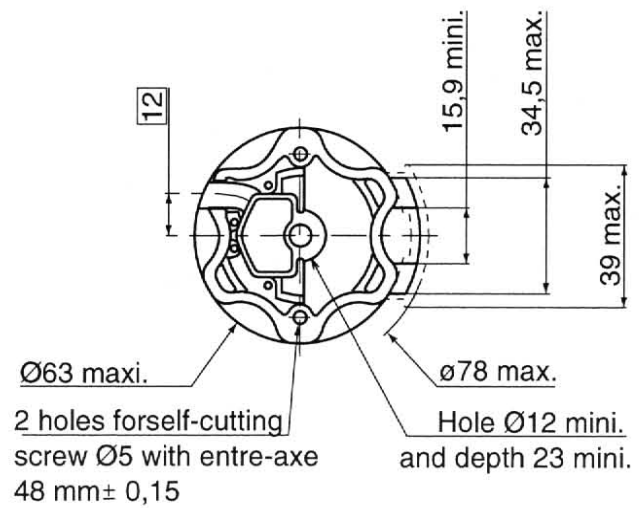
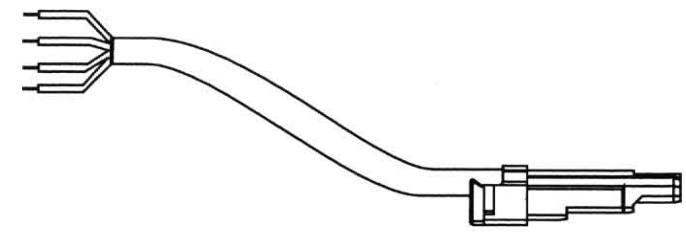
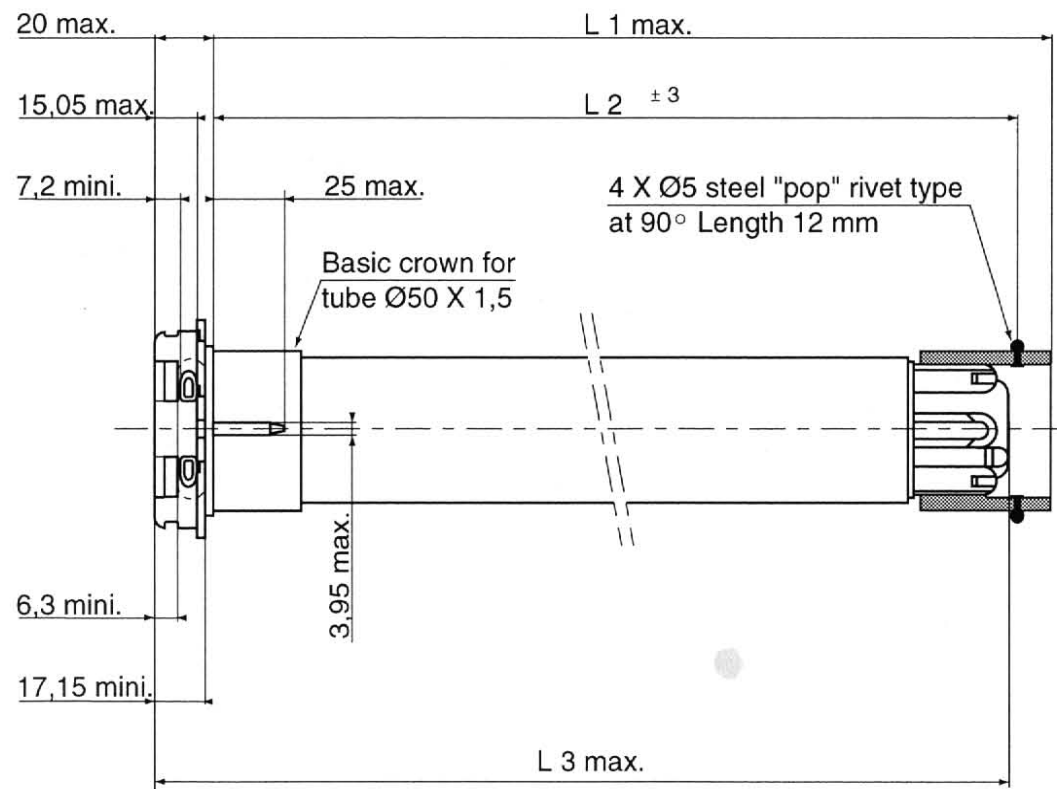
Designation	Nm	rpm	reference	mm			tube	W	A	C	Brake type	kg	dBA
	Nominal torque	Nominal speed		L1 max.	L2 (±3 mm)	L3 max.		Rated power	Rated current	Thermal tripping		Weight	Noise
504S4	4	32/38	200380	525	510	533	460	90	0,45	140	sliding	1,85	-
510S4	10	32/38	200381	555	540	563	490	135	0,7	150	sliding	2,15	-
515R4	15	12/14	200370	525	510	533	460	90	0,45	150	sliding	1,95	-
515A4	15	17/20	200375	555	540	563	490	110	0,6	150	sliding	2,15	-
520R4	20	12/14	200371	555	540	563	490	110	0,6	150	sliding	2,15	-
520A4	20	17/20	200376	605	590	613	540	135	0,7	150	sliding	2,55	-
525R4	25	12/14	200372	555	540	563	490	135	0,7	150	sliding	2,2	-
530R4	30	12/14	200373	605	590	613	540	135	0,7	150	sliding	2,55	-



12/02/98 **LT 50 TECHNICAL DATA**

RANGE 4

WIRING	Neutral	Blue
	White button	Brown
	Yellow button	Black
	Earth	Green / Yellow



Visa : BEM *[Signature]* Quality *[Signature]* MKI *[Signature]*