

SOMFY®

12/02/98

LT 50 TECHNICAL DATADMKI - FPTE
RANGE 5
LT50Range5R0

Nominal voltage	240 V - 50 Hz
Power supply tolerances	225 - 254V
Thermal time	5 minutes
Number of wires of the cable	4
Wire section	0,75 mm ²
Type of limit switch unit	Quick limit switch
Capacity of the LSU	46 turns
Repeatability	± 5°
System of protection	IP 44
Interface drawings	Screw implantation for LT50 mounting 206810-Wheel interface LT50 206821-Crown interface LT50 206822-Interface drawing star head LT50 and LT50PA/PS 206823-Interface drawing LT50&60 buttons 206817.
Basic crown for tube Ø	50 x 1,5 mm
Temperature working range	Normal use : -10°C to +40°C Exceptionnal use (20% of the life time not continuous) : -25°C to + 70°C
Noise level	According to SOMFY measures (for information only).Worse value : in load up direction during 10 seconds.

Designation	Nm	rpm	reference	mm	mm	mm	mm	W	A	°C	Brake type	kg	dBA
	Nominal torque	Nominal speed		L1 max.	L2 (±3 mm)	L3 max.	tube	Rated power	Rated current	Thermal tripping		Weight	Noise
506S5	6	32	200394	525	510	533	460	115	0,5	140	sliding	1,85	52
510R5	10	12	200385	505	490	513	440	80	0,35	140	sliding	1,72	45
515R5	15	12	200386	525	510	533	460	115	0,5	140	sliding	1,85	48
515S5	15	32	200395	605	590	613	540	195	0,85	150	sliding	2,55	56
520R5	20	12	200387	525	510	533	460	130	0,55	150	sliding	1,95	48
525A5	25	17	200392	555	540	563	490	170	0,75	150	sliding	2,2	56
530R5	30	12	200388	555	540	563	490	160	0,7	150	sliding	2,15	55
540R5	40	12	200389	605	590	613	540	195	0,85	150	sliding	2,55	55
550R5	50	12	200390	605	590	613	540	220	0,95	150	sliding	2,55	55

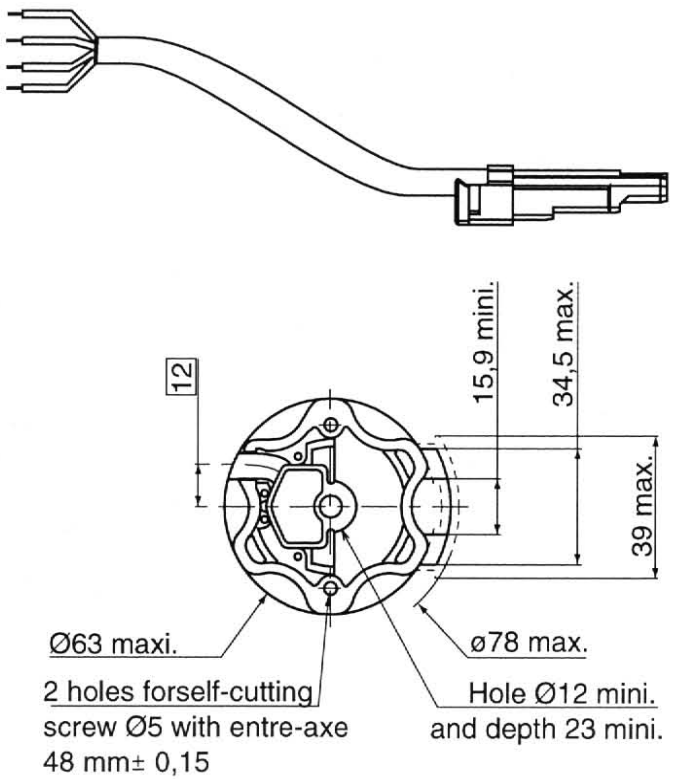
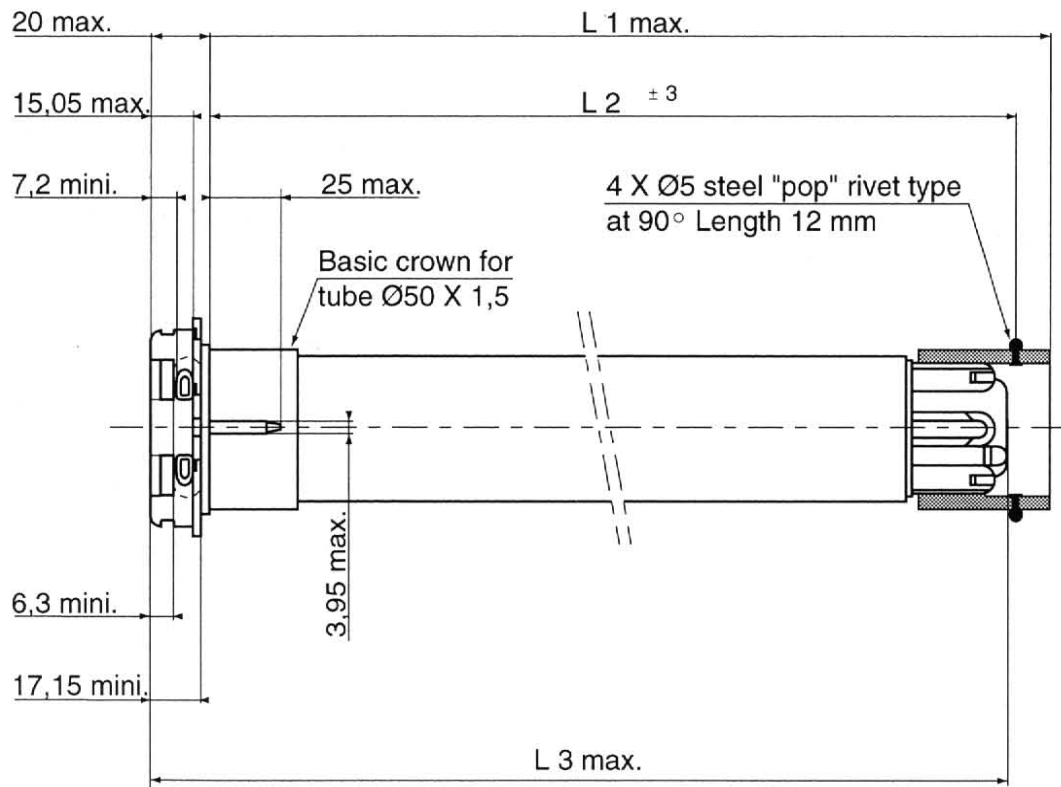


12/02/98

LT 50 TECHNICAL DATA

RANGE 5

WIRING	Neutral	Blue
	White button	Brown
	Yellow button	Black
	Earth	Green / Yellow



Visa : BEM Quality MKI