



14/03/00

**LT 50 SASO TECHNICAL DATA**

**DMKI - FPTE  
RANGE 2  
LT50SASORange2R0**

|                               |                                                                                                                                                                                                     |
|-------------------------------|-----------------------------------------------------------------------------------------------------------------------------------------------------------------------------------------------------|
| Nominal voltage               | 127 V - 60 Hz                                                                                                                                                                                       |
| Power supply tolerances       | 115 - 139 V                                                                                                                                                                                         |
| Thermal time (to reach 115°C) | 2,25 minutes                                                                                                                                                                                        |
| Number of wires of the cable  | 4                                                                                                                                                                                                   |
| Wire section                  | AWG 18                                                                                                                                                                                              |
| Type of limit switch unit     | Quick limit switch                                                                                                                                                                                  |
| Capacity of the LSU           | 46 turns                                                                                                                                                                                            |
| Repeatability                 | ± 5°                                                                                                                                                                                                |
| System of protection          | IP 44                                                                                                                                                                                               |
| Interface drawings            | Screw implantation for LT50 mounting 206810-Wheel interface LT50 206821-Crown interface LT50 206822-Interface drawing star head LT50 and LT50PA/PS 206823-Interface drawing LT50&60 buttons 206817. |
| Basic crown for tube Ø        | 50 x 1,5 mm                                                                                                                                                                                         |
| Temperature working range     | Normal use : -10°C to +40°C Exceptionnal use (20% of the life time not continuous) : -25°C to + 70°C                                                                                                |
| Noise level                   | According to SOMFY measures (for information only).Worse value : in load up direction during 10 seconds.                                                                                            |

| Designation | Nm             | rpm           | reference | mm      |            |         | tube | W           | A             | °C               | Brake type | kg     | dBA   |
|-------------|----------------|---------------|-----------|---------|------------|---------|------|-------------|---------------|------------------|------------|--------|-------|
|             | Nominal torque | Nominal speed |           | L1 max. | L2 (±3 mm) | L3 max. |      | Rated power | Rated current | Thermal tripping |            | Weight | Noise |
| 510R2       | 10             | 14            | 901175    | 505     | 490        | 513     | 440  | 80          | 0,7           | 140              | sliding    | 1,72   | -     |
| 515A2       | 15             | 20            | 901176    | 525     | 510        | 533     | 460  | 130         | 1,1           | 140              | sliding    | 1,95   | -     |
| 520R2       | 20             | 14            | 901177    | 525     | 510        | 533     | 460  | 130         | 1,1           | 140              | sliding    | 1,95   | -     |
| 525A2       | 25             | 20            | 901178    | 555     | 540        | 563     | 490  | 180         | 1,5           | 140              | sliding    | 2,15   | -     |
| 530R2       | 30             | 14            | 901179    | 555     | 540        | 563     | 490  | 170         | 1,45          | 140              | sliding    | 2,15   | -     |
| 535A2       | 35             | 20            | 901180    | 605     | 590        | 613     | 540  | 250         | 2,1           | 140              | sliding    | 2,55   | -     |
| 540R2       | 40             | 14            | 901181    | 605     | 590        | 613     | 540  | 210         | 1,6           | 140              | sliding    | 2,55   | -     |
| 550R2       | 50             | 14            | 901182    | 605     | 590        | 613     | 540  | 250         | 2,1           | 140              | sliding    | 2,55   | -     |

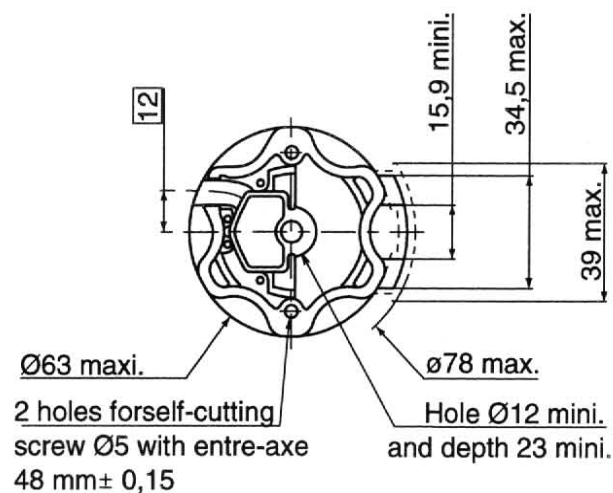
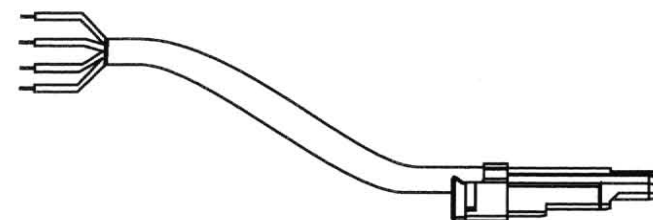
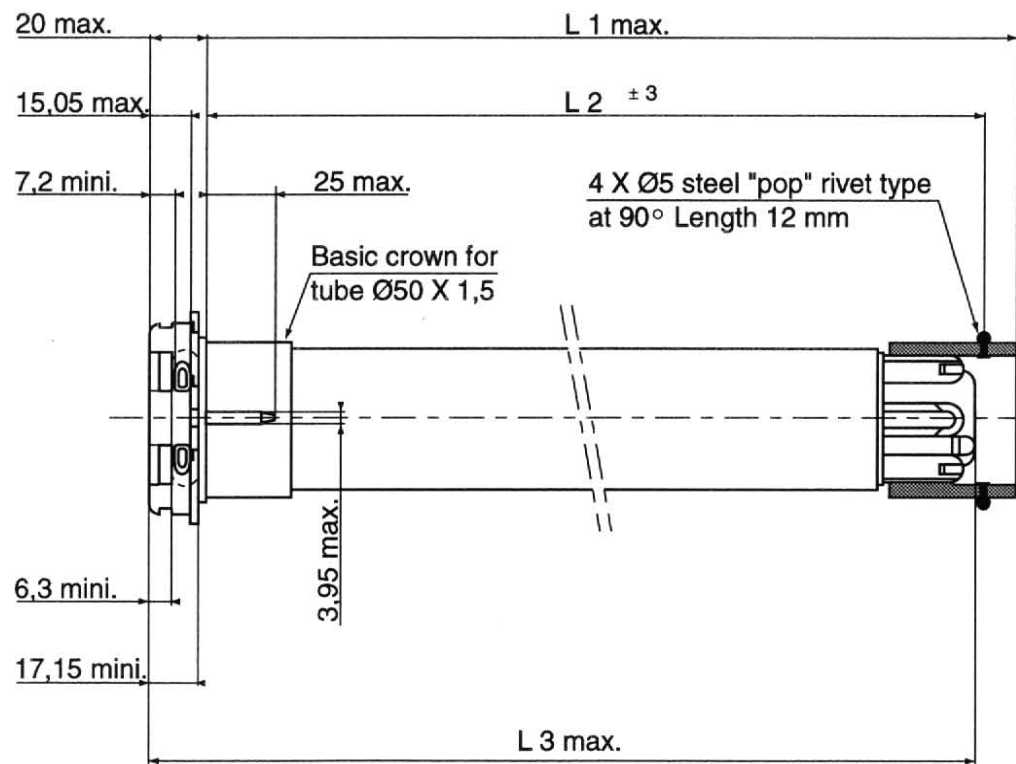


14/03/00

LT 50 SASO TECHNICAL DATA

RANGE 2

|        |               |       |
|--------|---------------|-------|
| WIRING | Neutral       | White |
|        | White button  | Black |
|        | Yellow button | Red   |
|        | Earth         | Green |



|        |              |                            |                        |
|--------|--------------|----------------------------|------------------------|
| Visa : | DT <i>BS</i> | Quality <i>[Signature]</i> | GMD <i>[Signature]</i> |
|--------|--------------|----------------------------|------------------------|