

25 - 03 - 2010

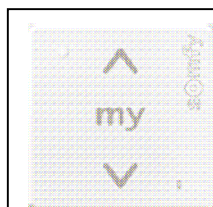
SDEV-FICA 87R1

Designation	Smoove 1 RTS
Reference	1810881 (pure shine); 1810964 (pure industrial min qty 50); 1810882 (black shine); 1810883 (silver shine); 1810884 (red light)
Range	RTS

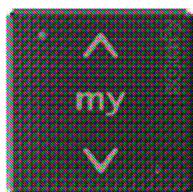
FUNCTIONS

- Sensitive Command : Up, My, Down
- Setting with RTS ergonomic
- Composition: 1 module, 1 Mounting plate

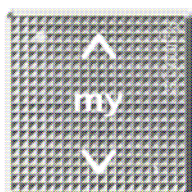
- Icon Battery life time
- Switch ON/OFF



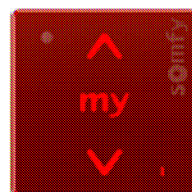
Smoove 1 Pure Shine



Smoove 1 Black Shine



Smoove 1 Silver Shine



Smoove 1 Red Light

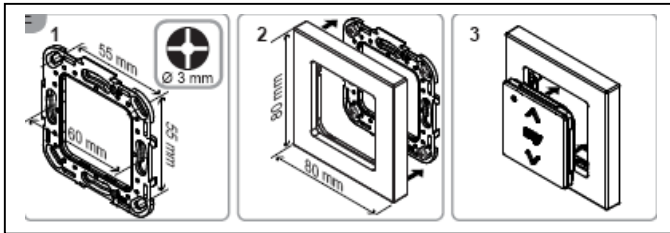


Support mural

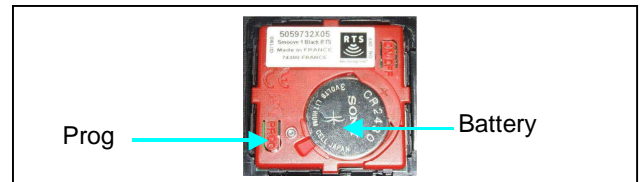
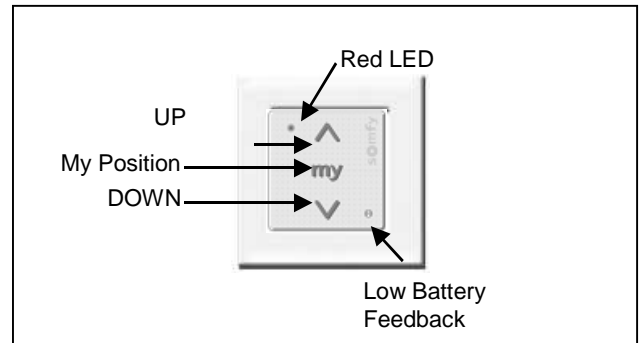
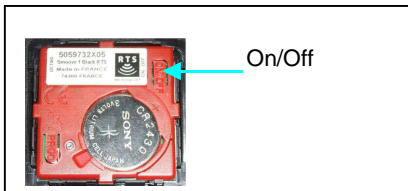
TECHNICAL SPECIFICATIONS

Box	Material Color	ABS & PC Pure Shine, Black Shine, Silver Shine, Red Lisa
mm	Size	Module 50 x 50 x 10
	Protection factor against solid & splashproof	IP 30
Battery	Voltage Type Number	3V CR 2430 x1
Battery lifetime (at ambient temperature in typical conditions)		42 months
Radio frequency		433.42MHz
Protocol Antenna		RTS Integral
Temperature range	Storing Working	-30°C / +70°C 0°C / +60°C
Drop test		Installation: at 0°C 1/face (height : 1,2m) Using: at 20°C 1/face (height : 1,2m)
Wear resistivity Cleaning products resistivity		50 250 cycles
Weight Standard (CE)		24g
<i>Safety of the user : EN EN60950-1 : 2006</i>		
<i>Health of the user : EN50371 : 2002</i>		
<i>Electromagnetic compatibility : EN61000-6-1: 2007_EN61000-6-3 : 2007_EN301 489-3 V1.4.1 : 2002_EN301 489-1 V1.8.1 : 2008</i>		
<i>Radio Spectrum : EN300220-2 V2.1.2 : 2007_EN300220-1 V2.1.1 : 2006</i>		

DESCRIPTION



Red cover for RTS technology



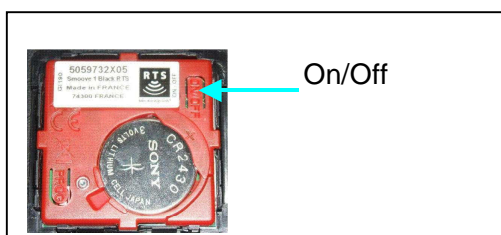
COMPATIBILITIES

Actuators :

- All RTS actuators

INSTALLATION

Switch ON/OFF

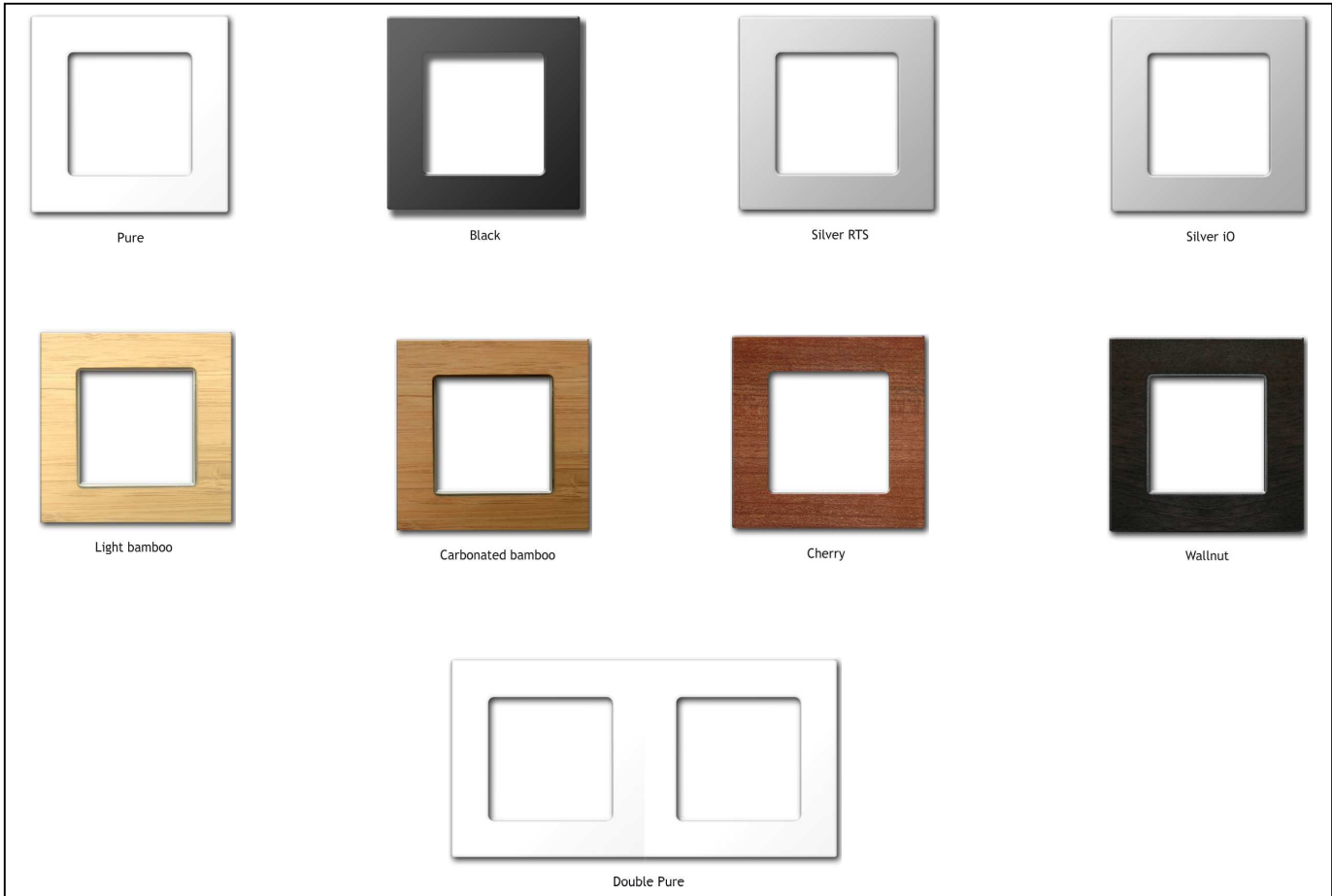


- Press On/Off button for wake up the sensitive pad.

Remark

The prog button is available when the module is OFF

Frame available



BE – R&D
F. GIGOUT

QUALITY
G. BRUNEAU

MARKETING
C. DENIAU