


DEXXO 1000 IO

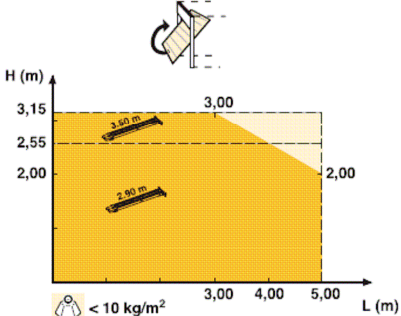
NEW

Product reference	1216126	Cancels & replaces	/
EAN Code	/	Guarantee	5 years
Pack dimensions (LxHxD)	47x23x27 (cm)	Marketing date	December 2007
Weight	6,980 (kg)		
Pack type	Brown and black box		
Minimum order	1		
Delivery mode	According to delivery (palette or box)	<p>MADE IN France www.somfy.com</p>	

Pack content



- 1 motor head with connectors
- 1 customisable remote control
- 1 lamp 40W
- 1 intel yoke
- 1 door yoke
- 1 linking arm
- 4 motor's fastening hooks
- 1 antenna
- 1 bag of accessories
- Installation manuals

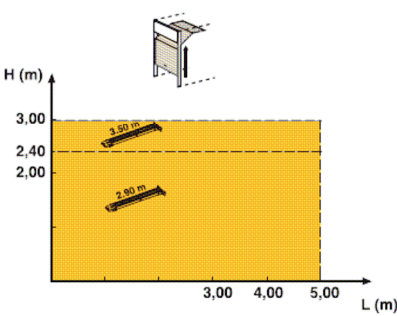




H (m)
3,15
2,55
2,00

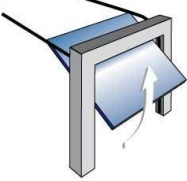
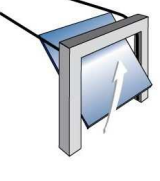

L (m)
3,00 4,00 5,00

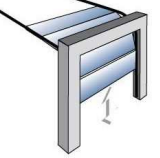
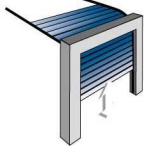
 < 10 kg/m²
 < 14 kg/m²

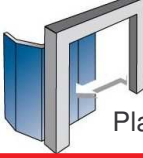


H (m)
3,00
2,40
2,00

L (m)
3,00 4,00 5,00

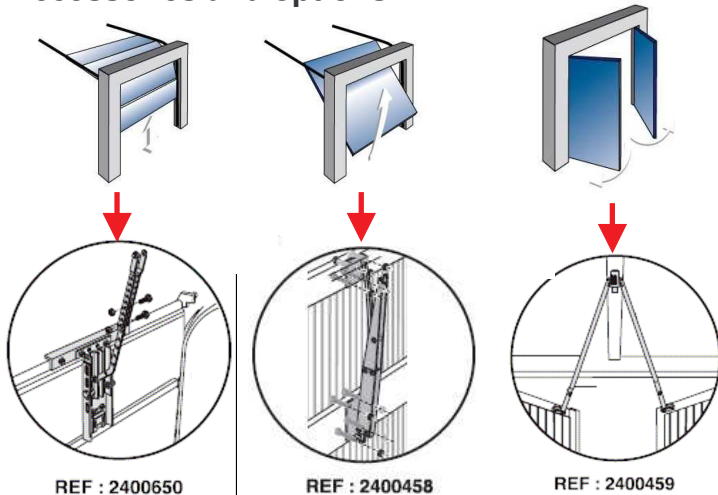






DELAYED
Planning in progress

Accessories and options :



Battery pack	9001001
Io antenna	9013953
Orange warning light	9012762
Photo cells	9012763
Keytis 4 io	1841053
Key switch	1841028
Keytis 4 home io	1841054
External release door	9012961
Side door security kit	2400657
Door locking kit	2400651
External unlocking device	9012962

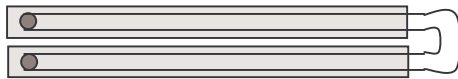
Rail

Rail

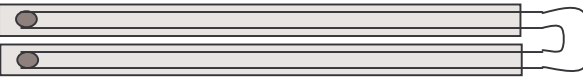


36500 cycles

2,90



3,50



Belt Rail

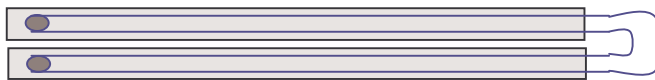


36500 cycles

2,90



3,50



High performance Rail



90 000

2,90



3,50



TECHNICAL SPECIFICATIONS

Mains supply	230V 50Hz
reduction gear supply	24V DC
Power consumed in standby	5W
Max. power consumed	350W (Excluding remotely controlled lighting)
Traction Force	1000N
Types of rails available	chain - Belt - High performance transmission
Lenghts of rails available	2,9 m : one part or two parts 3,5 m : one part or two parts
Max. door dimensions	15 sp. Meter
Use	20 cycles per day for a standard rail (tested for 36 500 cycles) 50 cycles per day for a high performance rail (tested for 90 000 cycles)
Min. height under the lintel	35 mm
Overall length	With a 2,9 m rail : 3,24 m (3,09 m if the motor head is mounted with a 90° offset) With a 3,5 m rail : 3,74 m (3,59 m if the motor head is mounted with a 90° offset)
Weight	Motor head : 6,98 kg Rail : 5,6 to 10 kg depending on the type of rail
Opening speed	18 cm/s max.
Number of channels that can be stored	Situo io : 6 Others : Unlimited
Somfy radio frequency	868-870 MHz
Built in lighting	230 V / 40 W max. E14 socket
Remotely controlled lighting	230 V / 500 W max. Class 2 <input type="checkbox"/>
Operating temperature	- 20 °C / + 60 °C (- 4 °F / + 140 °F)
Assigned duty time	60 s.
Electrical insulation	Class 2 - Double insulation <input type="checkbox"/>

This product complies with the "safety, specific rules for powering vertically opening garage doors in residential use" requirements (standard EN 60335-2.95). When installed in line with the instructions and in compliance with the "Installation check list", the product will be compliant with standards EN 13241-1 and EN 12453.

SOMFY hereby declares that the device is compliant with the essential demands and other relevant requirements of directive 1999/5/CE.

A declaration of compliance is available from the web site at www.somfy.com/CE (Dexxo Pro).