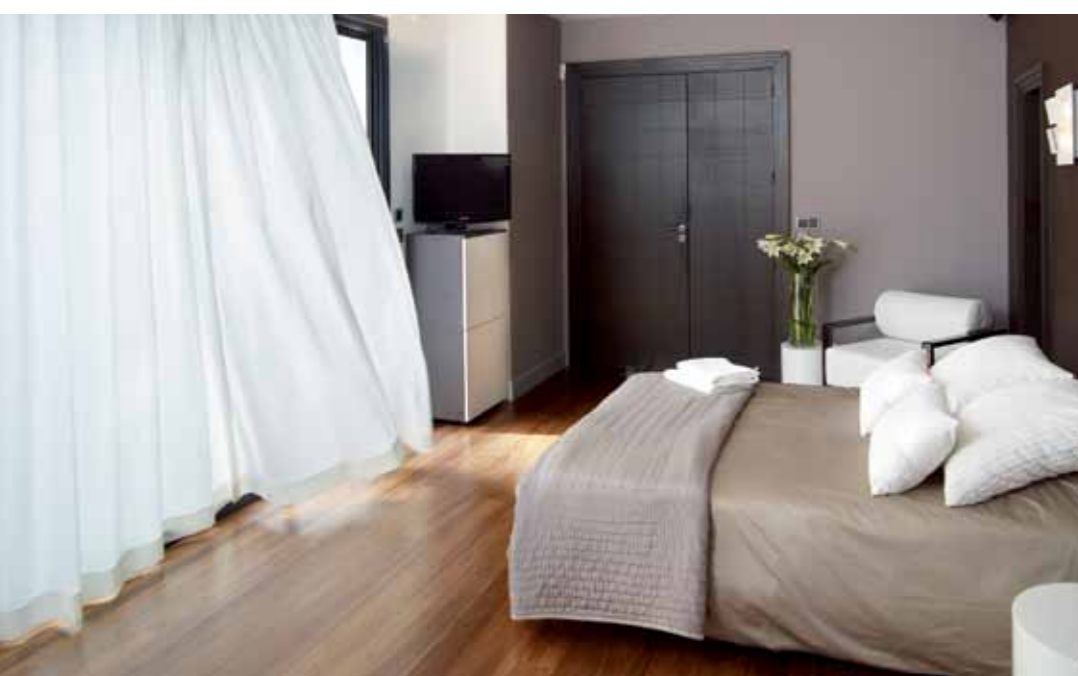


**Irismo® Range**  
MOTORISATION SOLUTIONS FOR CURTAINS

# broaden your horizons with Somfy



**Irismo<sup>®</sup>,  
motorises 80%  
of your curtain  
applications.**



## Irismo<sup>®</sup> range

the essential of somfy motorisation

The Irismo<sup>®</sup> range meets all your requirements, offering a competitive, top quality solution for curtain motorisation.

You have the ideal solution, easy to access and install, to enter the home automation market.

### Irismo<sup>®</sup>, a package of benefits

#### For you

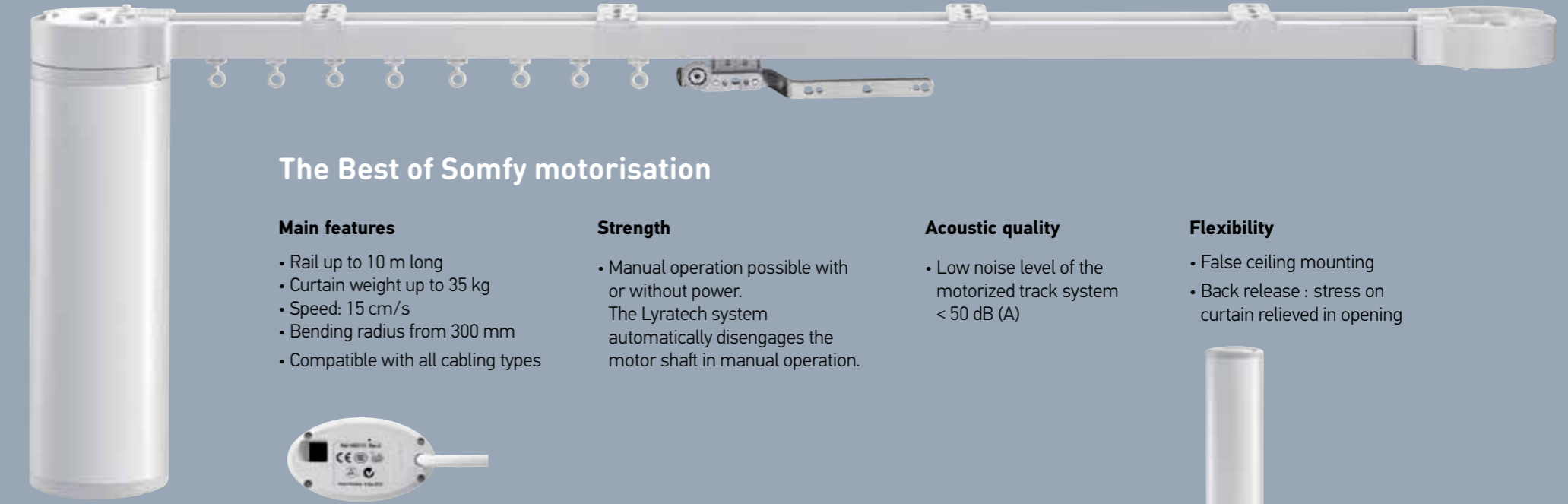
- **Simplified integration** with advanced functionalities: back release, DCT setting mode, reverse rotation.
- **For all types of curtains**, all sizes and shapes to cover 80% of curtain applications.
- **A full range of products**, appropriate for all your designs, available in all control technologies.
- **Fully compatible with the Glydea<sup>™</sup> range**: identical settings and cabling procedures, accessories and rails catalogue, no specific training needed.

#### For your customers

- **Essential functionalities to motorise the curtain**: open, stop, close and manual operation.
- **Acoustic comfort** of the motorised track system.
- **Somfy reliability and quality**: tested for 15 years of operation.
- **5 years** international warranty.



#### International certifications



### The Best of Somfy motorisation

#### Main features

- Rail up to 10 m long
- Curtain weight up to 35 kg
- Speed: 15 cm/s
- Bending radius from 300 mm
- Compatible with all cabling types

#### Strength

- Manual operation possible with or without power. The Lyratech system automatically disengages the motor shaft in manual operation.

#### Acoustic quality

- Low noise level of the motorized track system < 50 dB (A)

#### Flexibility

- False ceiling mounting
- Back release : stress on curtain relieved in opening



### Control Technologies



#### Inis uno inteo PF

- Individual control switch
- Functions: up, down, stop.



#### Moco 4 AC

- Motor controller for animeo solutions
- Input: 1 to 4 control switches.
  - Output: 1 to 4 motors.
  - Programming for individual or group control.



#### Smoove 1 Open/Close RTS

- Wall-mounted touch control
- 1 channel
  - Functions: open, close, stop.
  - Modular design suits all decorative styles: 2 finishes for the functional module, choice of 8 frames.



#### Centralis IB

- Wall-mounted touch control
- Individual or group control
  - Two or three-button selector control



### **Somfy Pte Ltd**

50 Ubi Avenue 3  
#02-16/17, Frontier  
Singapore 408866  
T +65 6383 3855  
F +65 6383 4933  
E contact\_sg@somfy.com

[www.somfy.com.sg](http://www.somfy.com.sg)

[www.somfy-architecture.com.sg](http://www.somfy-architecture.com.sg)

### **Somfy Malaysia Branch Office**

Unit No. 8-16-6  
Menara Mutiara Bangsar  
Jalan Liku, Off Jalan Riong  
Bangsar, Kuala Lumpur 59100  
T +60 3 228 74743  
F +60 3 228 74744  
E somfymalaysia@somfy.com

[www.somfy.com.my](http://www.somfy.com.my)

[www.somfy-architecture.com.my](http://www.somfy-architecture.com.my)

### **Somfy Indonesia Representative Office**

Kemang Point Suite 2.01  
Jalan Kemang Raya No. 3  
Jakarta 12730  
T +62 21 719 3620  
F +62 21 719 7447  
E somfyindonesia@somfy.com

[www.somfy.co.id](http://www.somfy.co.id)

[www.somfy-architecture.co.id](http://www.somfy-architecture.co.id)

A BRAND OF **SOMFY** GROUP

**somfy** Building  
happiness